

North Central Region

Center for FSMA Training, Extension
and Technical Assistance

November 2022

New FSOP Awardees

Congratulations to all the Food Safety Outreach Program grant awardees in the North Central Region! Eight projects were awarded funding in our region. We look forward to collaborating with all of you throughout your projects! Congratulations to Pratik Banerjee, University of Illinois; Betty Feng, Purdue University; Shannon Coleman, Iowa State University; Cindy Borgwordt, Lincoln University; Maile Auterson, Springfield Community Gardens; Pei Liu University of Missouri; Heidi Ziegenmeyer, Cankdeska Cikana Community College; and Barb Ingham, University of Wisconsin.

Fall Professional Development



The **Fall Professional Development meeting** was held October 4-5. The group gathered in Vincennes, IN, for two full-days of classroom talks, hands-on activities, and demonstrations, including seeing a melon bus. [See more pictures in the NCR Box](#). Let us know if you need access and we'll add you to the folder. If you attended and have yet to [fill out the evaluation](#), please do so before October 31.

Thank you to the 14 people who have filled it out.

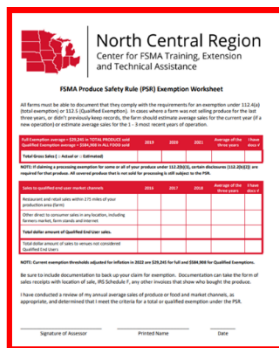
Annual Conference – Save the Date

The dates for the [2023 NCR FSMA Annual Conference](#) will be March 15-16. We will meet at the Lismore Hotel, in Eau Claire, WI. We are still confirming a farm tour, but the conference will begin at 1:00 on Wednesday. Short courses may be offered before the conference. If you are interested in offering a course, [please let us know](#). Registration will open in mid-November.

What's New on the Produce Safety Clearinghouse?

- The PC Human Food Rule applies to [facilities such as food hubs](#) and some farms (depending on if you're aggregating). This guide provides information and a flow chart to help businesses that are subject to the PC Rule determine if they need to be in compliance with the supplier verification requirement and how they could go about that with the farmers they buy from.
- It's not a new resource, but the [National Water Quality Testing Labs Map](#) has been recently updated to help growers find local labs that can provide agricultural water testing.

Featured NCR FSMA Resource



The communication survey found that not all the NCR FSMA partners (you!) are familiar with the resources that the group put together in 2018. So we'll be highlighting a resource each month. You can find all the resources on [our website](#).

The exemption envelope helps growers retain receipts and calculate if they qualify for an exemption. The document can be downloaded and printed, or we can mail you some (although the printed version doesn't have the most current, inflation-adjusted amounts). Or you can access the fillable PDF from K-State.

Federal Updates

Centers for Disease Control and Prevention released a [report on foodborne disease](#), showing a downward trend in 2021, compared to 2016–2018. Reported enteric (intestinal) infections decreased overall in the United States in 2021, according to a preliminary report from the Foodborne Diseases Active Surveillance Network (FoodNet). FoodNet tracks the number of reported cases per 100,000 people, called incidence, for eight pathogens. Incidence of infections caused by these pathogens fell by 8% overall.

Factors related to the COVID-19 pandemic likely influenced exposure to foodborne pathogens and detection of infections.

FDA takes its responsibility to safeguard the food supply very seriously and is committed to being transparent about how FDA approaches its food safety mission, particularly about how the agency responds when it receives reports of foodborne illness and other adverse events. That is what three foods program leaders will discuss in this [conversation](#) about challenges and opportunities they face every day in working to protect consumers from potential hazards in the complex, global food system.

USDA's Farm Service Agency is hosting a webinar in partnership with AMS and NASDA, to provide information about USDA's Food Safety Certification for Specialty Crops (FSCSC) Program, which provides financial assistance to specialty crop producers who obtained or renewed an on-farm food safety plan or food safety certification.

Target Audiences: Specialty Crop Growers and Stakeholder Organizations

Day/Time: November 3 at 1:00 PM CST

[Register](#) in advance for this webinar.

Updates from our Partners

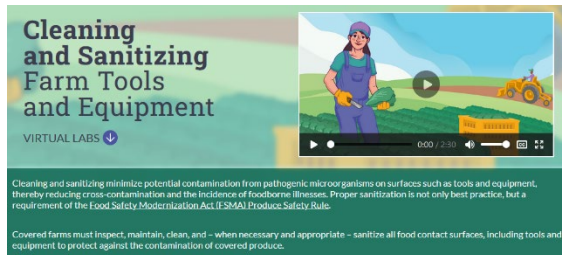


[Bridging the GAPs: Approaches for Treating Preharvest Agricultural Water On-Farm Training Course](#): Fruit and vegetable growers are continually assessing their operations to determine where they can limit risk and increase productivity. As a result, many have expressed interest in learning more about how on-farm pre-harvest water treatment systems work and how they may fit within their current setup.

This course will be offered both remotely and in-person.

The [remote class](#) will be Dec. 8 and 9. Register by November 8.

The [in-person course](#) will be Jan. 4 in Savannah, GA. Register by December 16.



[Cleaning and Sanitizing of Farm Tools and Equipment](#) is a new online resource to train produce farmers about the fundamentals of sanitization and how to monitor sanitizers using test strips or titration kits. The interactive simulates how to follow proper monitoring procedures, evaluate results, and record findings.

All content is available in English and Spanish.

Farmers, educators, and other produce industry representatives check it out and tell us what you think by completing this [5-minute survey](#) by October 30!

The Nebraska MEP, The Food Processing Center, & Presage Analytics, Inc. present: [The Food Safety Lunch Hour](#) with Dr. Byron Chaves. All virtual sessions meet the last Tuesday of the month, from 12:00 noon - 1:00 p.m. CT.



Next on CONTACT's Produce Safety Webinar Series is ***“Does this Look Risky to You? Diving into Subpart E”***, on November 10, at 2:30 pm Central time. This webinar will feature Dr. Channah Rock from the University of Arizona. Dr. Rock will cover assessing and evaluating risks associated with the use of production water, and how we manage those risks on the farm including water treatment. [Registration is free and required.](#)

Funding Available

The NCR FSMA budgeted funds to support professional development, outreach to underserved communities, and resource development/translation. **To access these \$500 stipends, [apply on our website](#).** One professional development stipend is available to each state, per year of our grant. If you accessed those funds between September 2021 and August 2022, you can apply again.

Upcoming NCR FSMA Meetings

The **Listening Sessions/ Webinars** happen on the third Thursday of every month at 2:00, Central time. At the November 17 meeting, [behavioral scientist Loran Nordgren](#), will be presenting about his research that explores the psychological forces that propel and prevent the adoption of new ideas and actions.

Join from a PC, Mac, iPad, iPhone, or Android device:

[Join the meeting.](#)

Or, go to <https://iastate.zoom.us/join> and enter meeting ID: 845 702 039

Join from dial-in phone line:

Dial: +1 646 876 9923 or +1 669 900 6833

Meeting ID: 845 702 039

Update from the last meeting:



Kathiravan Krishnamurthy spoke on “Validating Critical Parameters for Juice Processors.”

You can [find a recording in the NCR Box](#).

The **meeting for state inspectors/regulators** will hold their next meeting will be Friday, November 4, at 9am, Central time. They will be having a discussion with Arlene Enderton about possibly collecting observations from their inspections.

The **meeting for data/inventory** will be Friday, November 18, at 9:00 am, Central time. Will Seeley, from the Indigenous Food and Agriculture Initiative, will be speaking about the unique relationship that Tribal nations have with the Federal Government and States and how State departments can support Tribal Nations.

The **meeting for program managers** will happen at its regular time, on Tuesday, November 8, at 10:00 am, Central time.

Please [contact us](#), if you need call information for any of these meetings.

Upcoming PSA Courses

Indiana (in-person): Nov. 21

Iowa (in-person): Jan. 11

Iowa/Nebraska (remote): Dec. 15; Jan. 24 & 26

Kansas (in-person): Nov. 4

Kansas/Missouri (remote): Nov. 21 & 22

Michigan (remote): Nov. 9; Dec. 12; Jan. 13 and 23; Feb. 13

Missouri (in-person): Nov. 1 and 2

North Dakota (in-person): Mar. 30

Wisconsin (in-person): Dec. 8

Online course: begins once per month and is offered in English or Spanish. (The first English-language course people can register for begins in February, so if you know growers who are interested, encourage them to sign up in advance.)

Check out the [Calendar](#) for postings of PSA courses offered nationally.

Find a list of [registered PSA Trainers](#).

Upcoming FSPCA Courses

Illinois: **PC Human Food:** Nov. 1, 14, 16, 20, and 30;
Dec. 5, 6, 12, and 13; Jan. 10 and 25

PC Animal Food: Dec. 5

FSVP: Nov. 8 and 10; Dec. 15; Jan. 17 and 19

Indiana: **PC Human Food:** Nov. 10

Iowa: **PC Animal Food:** Nov. 2 and 7

Kansas: **PC Animal Food:** Nov. 8

Michigan: **PC Human Food:** Nov. 14; Jan. 24

Nebraska: **PC Human Food:** Nov. 7

Ohio: **PC Human Food:** Nov. 1 and 9

Wisconsin: **PC Human Food:** Nov. 8; Dec. 13

Online: **PC Human Food:** Nov. 1, 2, 7, 8, 11, 14, 15, 16, 19, 21, 23, 28, and 29;
Dec. 5, 7, 10, 12, 13, 14, and 19; Jan. 2, 4, 9, 16, 17, and 23; Feb. 21; Mar. 20
PC Human Food (Spanish): Nov. 7, 14, 21, and 28; Dec. 5, 12, 19, and 26;

Jan. 2, 9, 16,

PC Human Food (Chinese): Nov. 7, 14, 21, and 28; Dec. 5, 12, and 19

PC Animal Food: Nov. 2, 7, 12, and 30; Dec. 3, 5, 12, 20, and 21;

Jan. 2 and 10; Feb. 6

FSVP: Nov. 7, 9, 14, 15, 16, and 21; Dec. 5, 12, 13, 15, 19, and 26; Jan. 2, 9, 10, 16, and 23; Feb. 6 and 13; Mar. 6 and 9

Check out the [Calendar](#) for postings of FSPCA courses offered nationally.

[Follow us on Facebook](#)

[Visit our website](#)

Sincerely,

NCR FSMA Training Center Team

Angela M Shaw

Arlene Enderton

Ellen Johnsen

Byron Chaves

Dan Fillius

Kathiravan Krishnamurthy

Phil Tocco

Iowa State University Extension and Outreach is an equal opportunity provider.

For the full non-discrimination statement or accommodation inquiries, go to

www.extension.iastate.edu/diversity/ext.